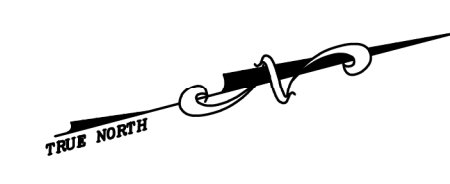


12/31/13	Top Map Revisions	REMOVED	DESCRIPTION
12/31/12	Top Map Revisions	REMOVED	DESCRIPTION
11/17/10	Subdivision-BK 747, lots 1 and 2	JSE	
09/03/10	Dedication of Capt. Carlsen Marina	JSE	
		REV. BY	CHK.

SHEET 36

SHEET 46

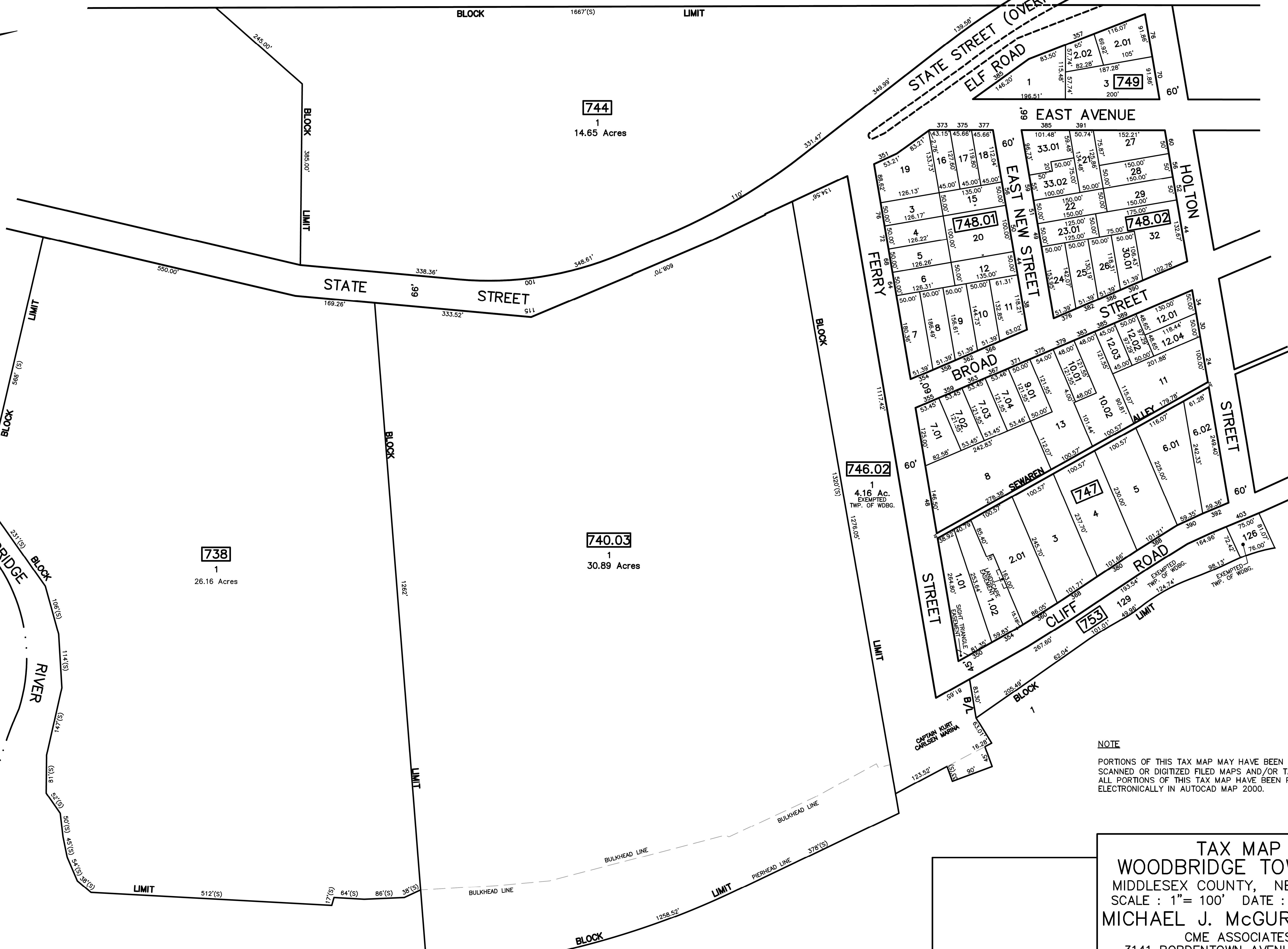


SHEET 36

SHEET 47

CITY OF PERTH AMBOY - MIDDLESEX COUNTY

CITY OF PERTH AMBOY - MIDDLESEX COUNTY



NOTE  
 PORTIONS OF THIS TAX MAP MAY HAVE BEEN PREPARED FROM  
 SCANNED OR DIGITIZED FILED MAPS AND/OR TAX MAPS.  
 ALL PORTIONS OF THIS TAX MAP HAVE BEEN PREPARED  
 ELECTRONICALLY IN AUTOCAD MAP 2000.

**TAX MAP**  
**WOODBIDGE TOWNSHIP**  
 MIDDLESEX COUNTY, NEW JERSEY  
 SCALE : 1" = 100' DATE : JUNE 2008  
**MICHAEL J. McGURL, P.L.S.**  
 CME ASSOCIATES  
 3141 BORDENTOWN AVENUE, PARLIN  
 NEW JERSEY, 08859