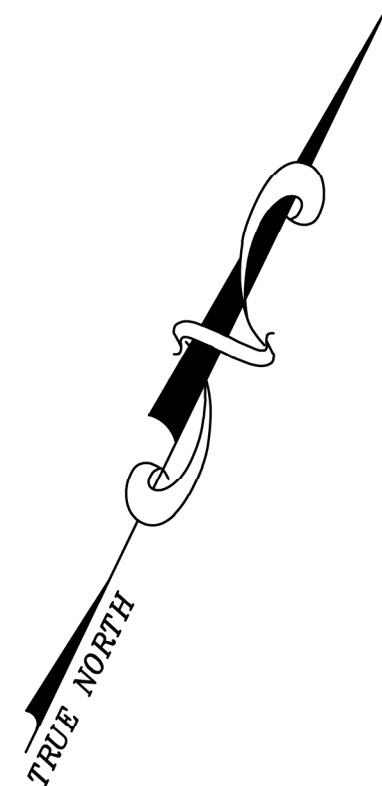
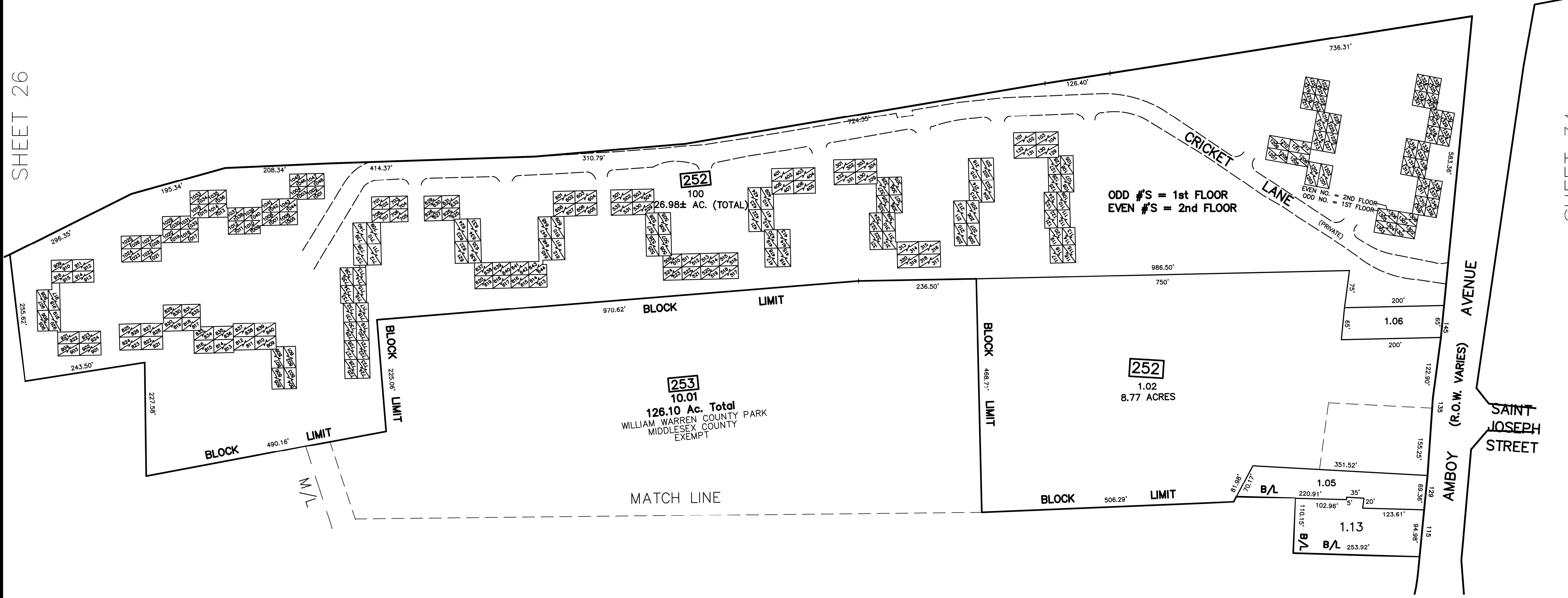
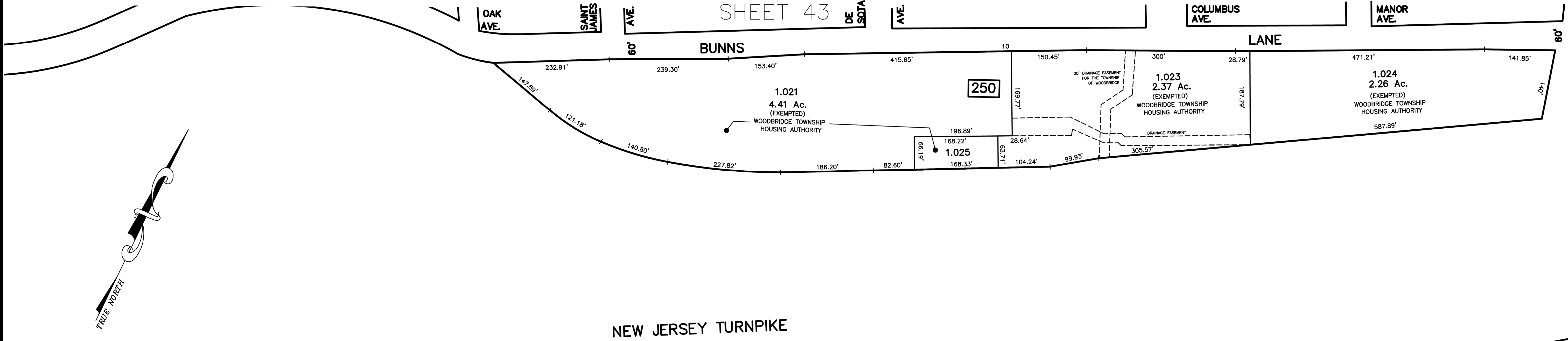


12/31/18	Tax Map Revisions	SR	REV. BY	CHK.
12/31/17	Tax Map Revisions	SR		
12/31/15	Tax Map Revisions	SR		
	REVISED			
	DESCRIPTION			



OAK AVE. SAINT JAMES AVE. SHEET 43 DE SOJA AVE. COLUMBUS AVE. MANOR AVE.



SHEET 26

SHEET 34

NOTE
 PORTIONS OF THIS TAX MAP MAY HAVE BEEN PREPARED FROM
 SCANNED OR DIGITIZED FILED MAPS AND/OR TAX MAPS.
 ALL PORTIONS OF THIS TAX MAP HAVE BEEN PREPARED
 ELECTRONICALLY IN AUTOCAD MAP 2000.

SHEET 27

TAX MAP
 WOODBRIDGE TOWNSHIP
 MIDDLESEX COUNTY, NEW JERSEY
 SCALE : 1" = 100' DATE : JUNE 2008
 MICHAEL J. MCGURL, P.L.S.
 CME ASSOCIATES
 3141 BORDENTOWN AVENUE, PARLIN
 NEW JERSEY, 08859