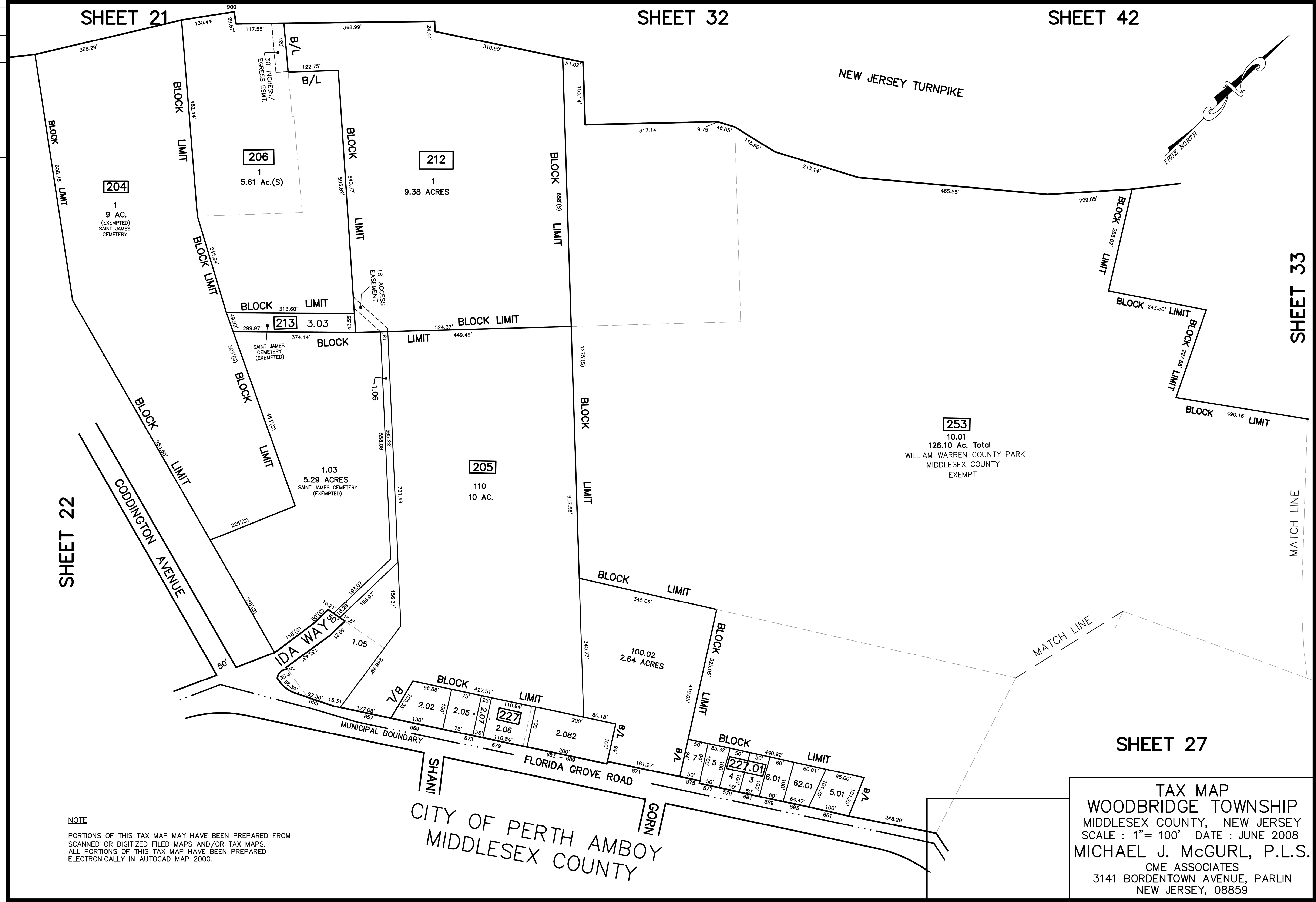


REV.	BY	CHK.	DESCRIPTION
12/31/15	SR		Tax Map Revisions
12/31/14	SR		Tax Map Revisions
12/31/14	SR		Tax Map Revisions
12/31/12	SR		Tax Map Revisions
			REVISED



SHEET 22

SHEET 21

SHEET 32

SHEET 42

SHEET 33

SHEET 27

NOTE
 PORTIONS OF THIS TAX MAP MAY HAVE BEEN PREPARED FROM
 SCANNED OR DIGITIZED FILED MAPS AND/OR TAX MAPS.
 ALL PORTIONS OF THIS TAX MAP HAVE BEEN PREPARED
 ELECTRONICALLY IN AUTOCAD MAP 2000.

CITY OF PERTH AMBOY
 MIDDLESEX COUNTY

TAX MAP
 WOODBRIDGE TOWNSHIP
 MIDDLESEX COUNTY, NEW JERSEY
 SCALE : 1"= 100' DATE : JUNE 2008
 MICHAEL J. McGURL, P.L.S.
 CME ASSOCIATES
 3141 BORDENTOWN AVENUE, PARLIN
 NEW JERSEY, 08859