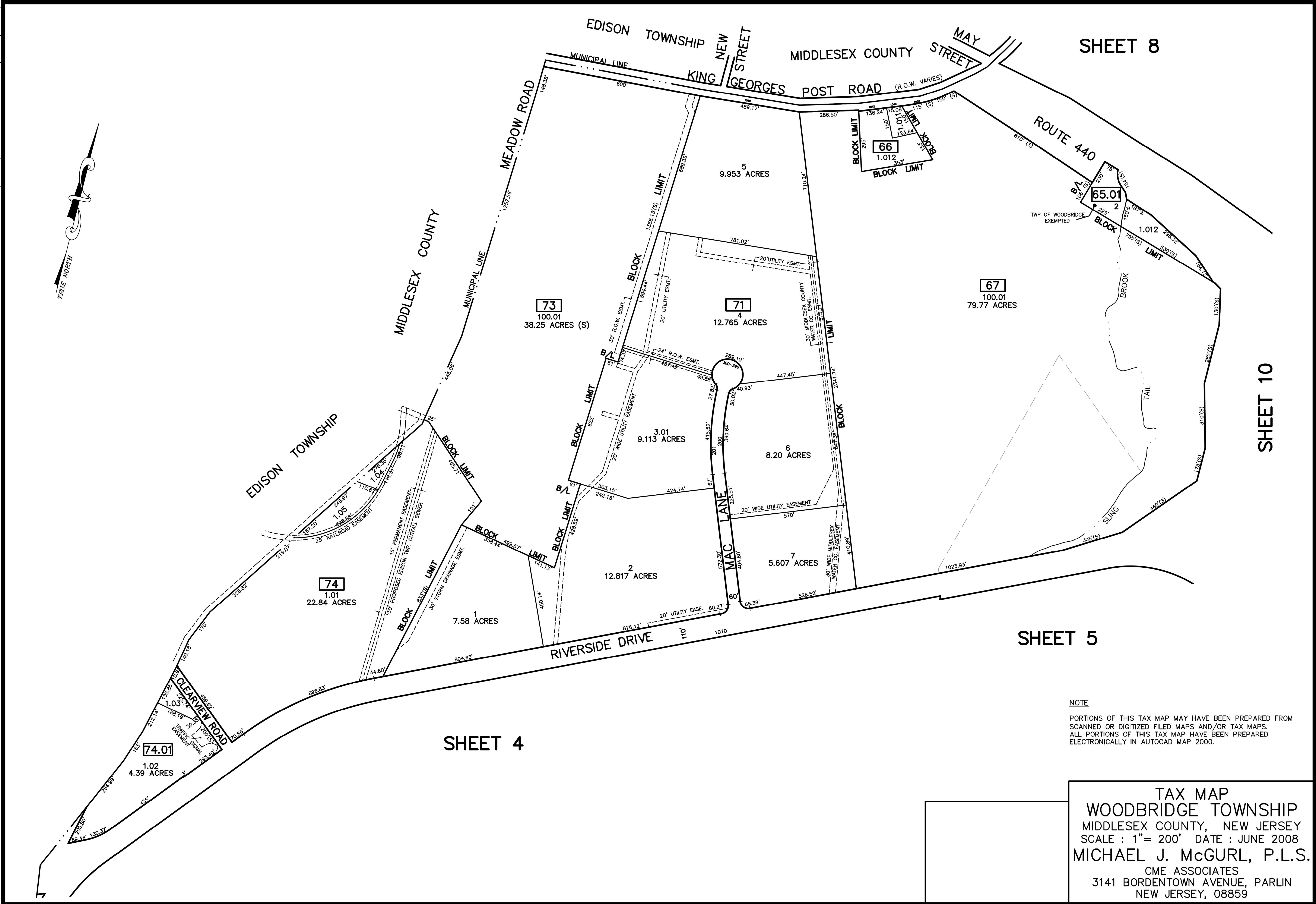
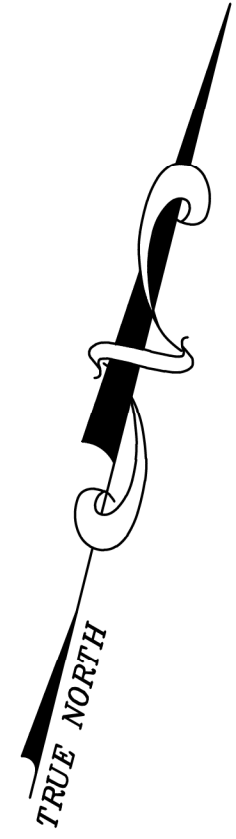


DATE	DESCRIPTION	REV. BY	CHK.
12/31/15	Tax Map Revisions	SB	
12/31/14	Tax Map Revisions	SB	
12/31/13	Tax Map Revisions	SB	
REVISED	DESCRIPTION		



SHEET 8

SHEET 10

SHEET 5

SHEET 4

NOTE
 PORTIONS OF THIS TAX MAP MAY HAVE BEEN PREPARED FROM
 SCANNED OR DIGITIZED FILED MAPS AND/OR TAX MAPS.
 ALL PORTIONS OF THIS TAX MAP HAVE BEEN PREPARED
 ELECTRONICALLY IN AUTOCAD MAP 2000.

TAX MAP
WOODBRIDGE TOWNSHIP
 MIDDLESEX COUNTY, NEW JERSEY
 SCALE : 1" = 200' DATE : JUNE 2008
MICHAEL J. McGURL, P.L.S.
 CME ASSOCIATES
 3141 BORDENTOWN AVENUE, PARLIN
 NEW JERSEY, 08859