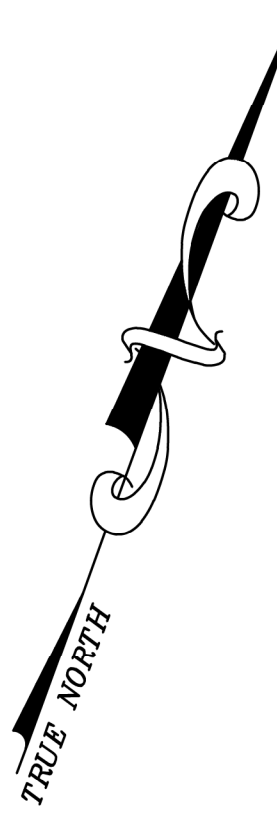


DATE	DESCRIPTION	REV.	BY	CHK.
12/31/16	Tax Map Revisions		SB	
12/31/14	Tax Map Revisions		SB	
12/31/13	Tax Map Revisions		SB	
11/2/11	Block 93, lot 100 & Block 83 lot 1-ESMITS		SB	
9/19/10	MCUA Easement-Block 51, lots 2 and 2.03		JSE	
9/16/10	Land use, Block 75.01, lots 1.00 and 1.04 - Block 75.01 to		JSE	
09/08/10	R.O.W. Taking, Block 75.01, lots 1.03, 1.04		JSE	
REVISED	DESCRIPTION			
			REV. BY	CHK.

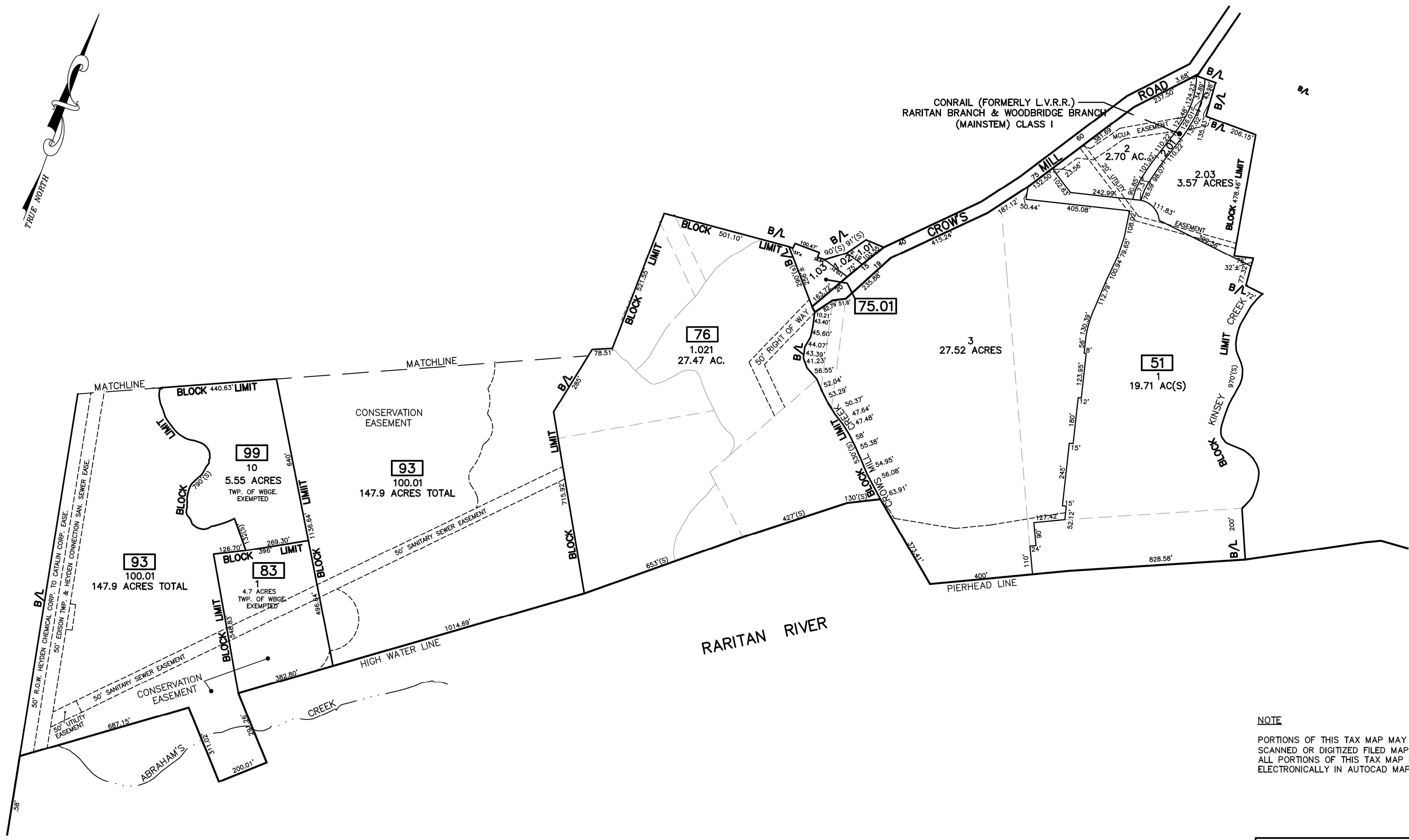
SHEET 4

SHEET 5



SHEET 1

SHEET 5



NOTE
PORTIONS OF THIS TAX MAP MAY HAVE BEEN PREPARED FROM
SCANNED OR DIGITIZED FILED MAPS AND/OR TAX MAPS.
ALL PORTIONS OF THIS TAX MAP HAVE BEEN PREPARED
ELECTRONICALLY IN AUTOCAD MAP 2000.

TAX MAP
WOODBRIDGE TOWNSHIP
MIDDLESEX COUNTY, NEW JERSEY
SCALE : 1"= 200' DATE : JUNE 2008
MICHAEL J. McGURL, P.L.S.
CME ASSOCIATES
3141 BORDENTOWN AVENUE, PARLIN
NEW JERSEY, 08859