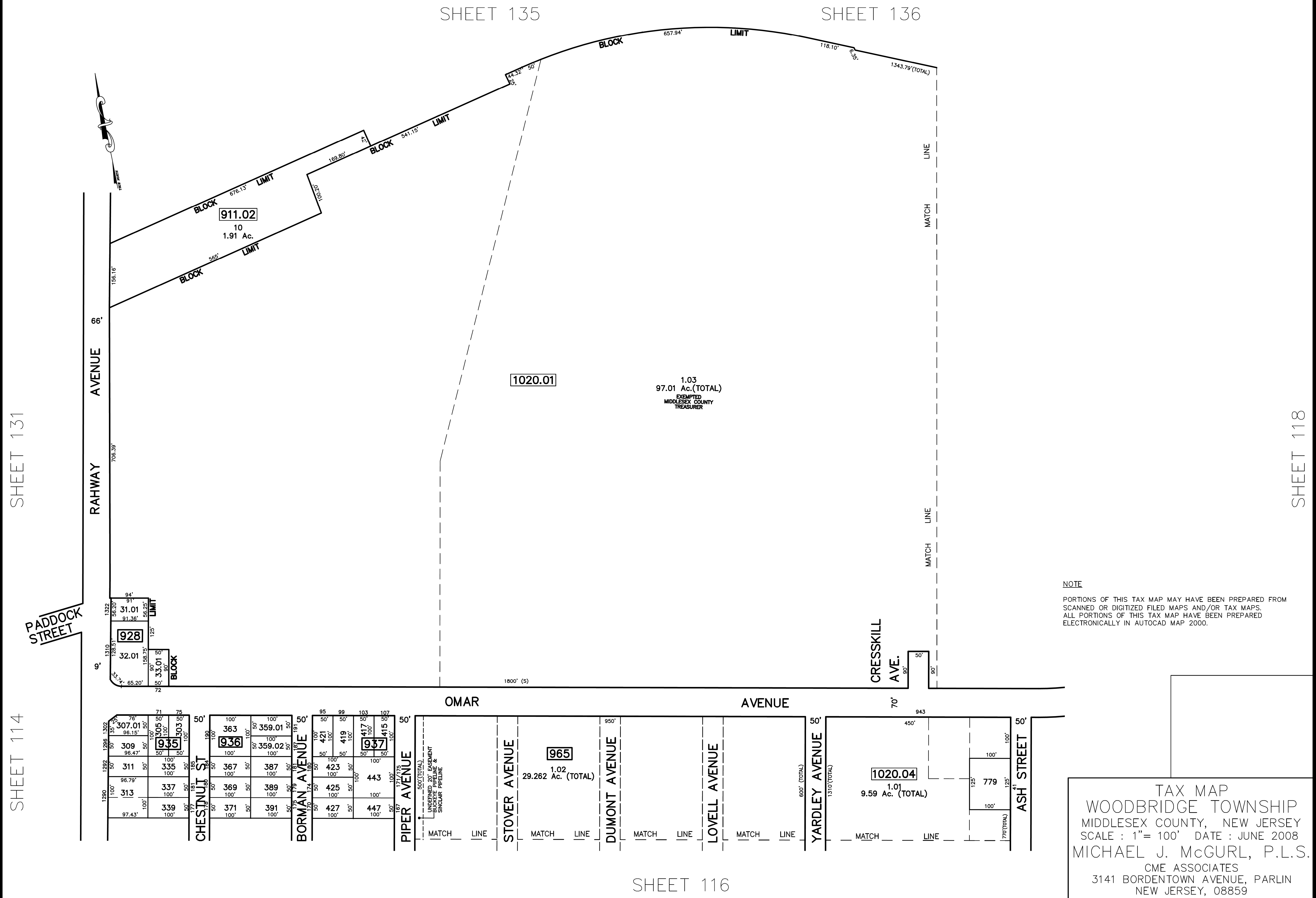


12/31/18	Tax Map Revisions	SB
12/31/16	Tax Map Revisions	SB
12/31/14	Tax Map Revisions	SB
12/31/12	Tax Map Revisions	SB
10/04/10	R.O.M. Takings-Bk. 328, lots 31 and 32	JSE
REVISED	DESCRIPTION	REV. BY
		CHK.



NOTE
 PORTIONS OF THIS TAX MAP MAY HAVE BEEN PREPARED FROM
 SCANNED OR DIGITIZED FILED MAPS AND/OR TAX MAPS.
 ALL PORTIONS OF THIS TAX MAP HAVE BEEN PREPARED
 ELECTRONICALLY IN AUTOCAD MAP 2000.

TAX MAP
 WOODBRIDGE TOWNSHIP
 MIDDLESEX COUNTY, NEW JERSEY
 SCALE : 1" = 100' DATE : JUNE 2008
 MICHAEL J. McGURL, P.L.S.
 CME ASSOCIATES
 3141 BORDENTOWN AVENUE, PARLIN
 NEW JERSEY, 08859

SHEET 135

SHEET 136

SHEET 131

SHEET 118

SHEET 114

SHEET 116