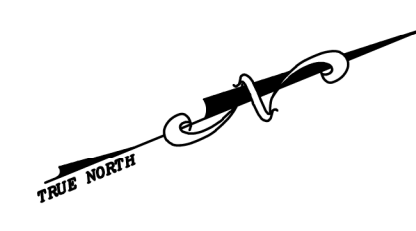
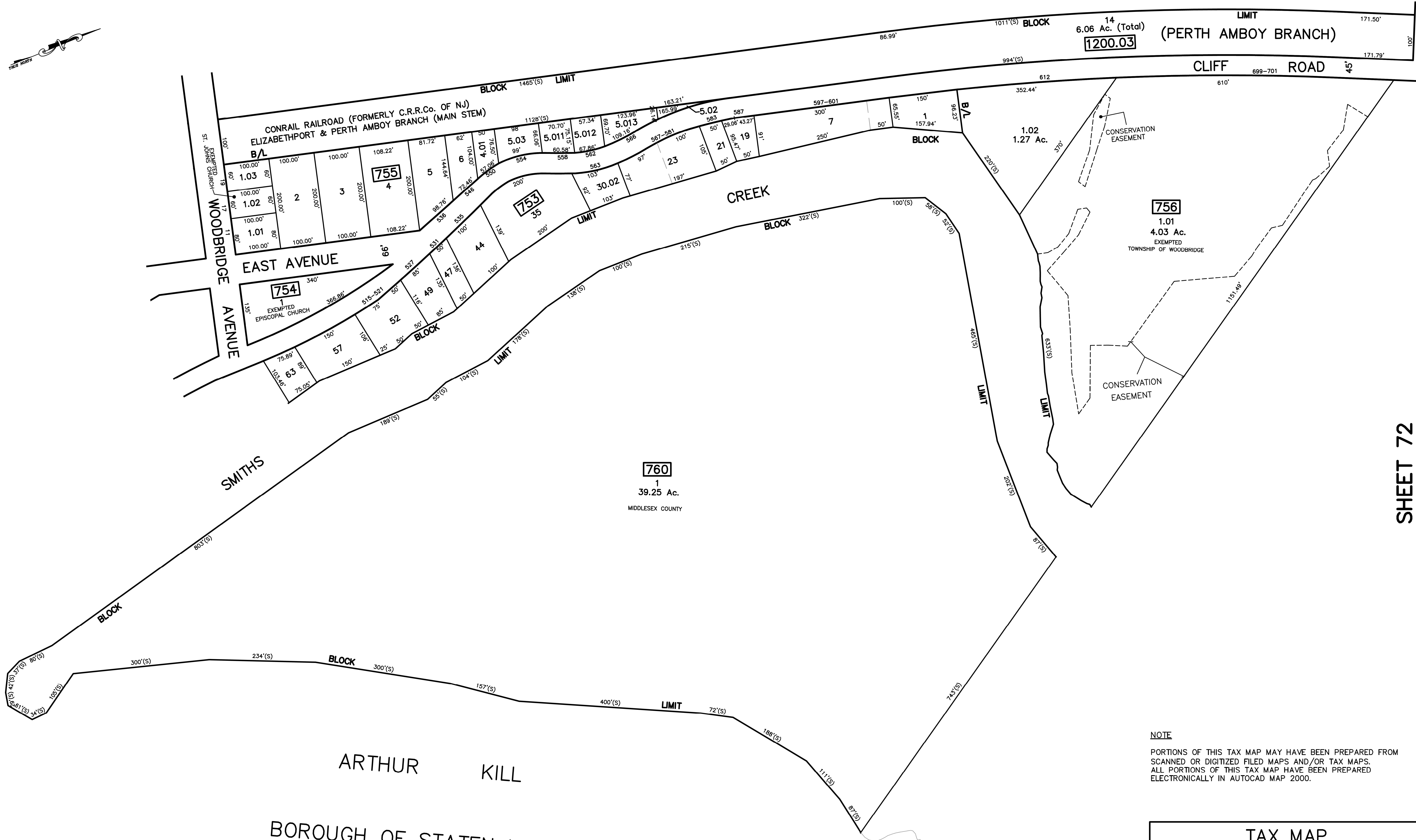


12/31/13	REVISED	12/31/13	REVISED
Tax Map Revisions	DESCRIPTION	Tax Map Revisions	DESCRIPTION
SB	REV. BY	CHK.	



SHEET 47

SHEET 72



NOTE
 PORTIONS OF THIS TAX MAP MAY HAVE BEEN PREPARED FROM
 SCANNED OR DIGITIZED FILED MAPS AND/OR TAX MAPS.
 ALL PORTIONS OF THIS TAX MAP HAVE BEEN PREPARED
 ELECTRONICALLY IN AUTOCAD MAP 2000.

ARTHUR KILL
 BOROUGH OF STATEN ISLAND
 NEW YORK

TAX MAP
 WOODBRIDGE TOWNSHIP
 MIDDLESEX COUNTY, NEW JERSEY
 SCALE : 1"= 100' DATE : JUNE 2008
 MICHAEL J. McGURL, P.L.S.
 CME ASSOCIATES
 3141 BORDENTOWN AVENUE, PARLIN
 NEW JERSEY, 08859